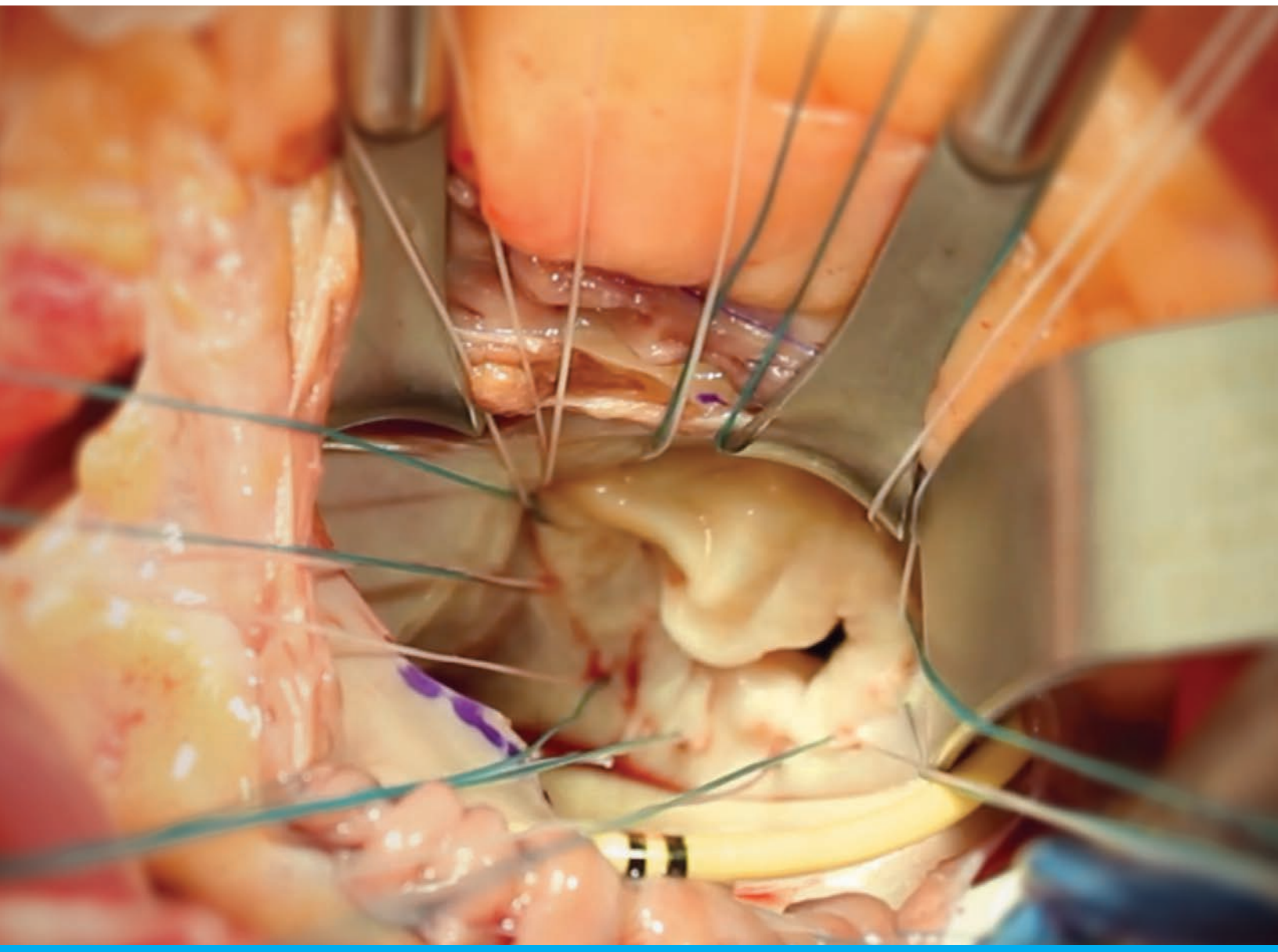


# Thompson Retractor

Uncompromised Exposure



## Cardiothoracic Catalog

FIRST EDITION

Bolling Mitral Valve Retractor - Drake Hook

## Table of Contents

Thompson Retractor: Innovation in Surgical Retraction ..... 3

Bolling Mitral Valve Retractor ..... 4-5

Drake Hook ..... 6-7

## Thompson Retractor

### Innovation In Surgical Retraction

Thompson Surgical Instruments, Inc. is the market leader in surgical retraction and the original manufacturer of the table mounted retractor. We understand the value of exposure in successful surgery and are dedicated to providing innovative, high quality retractor systems that deliver safe, versatile, low-profile retraction.

The Bolling Mitral Valve Retractor provides extremely low profile, stable, and Uncompromised Exposure of the heart structures for valve procedures. The Drake Hook is a new, innovative tool for use in mitral valve repair. Both were thoughtfully designed with surgeon input to provide the best exposure possible.

The Thompson Retractor has been in use for over 50 years in multiple surgical specialties.

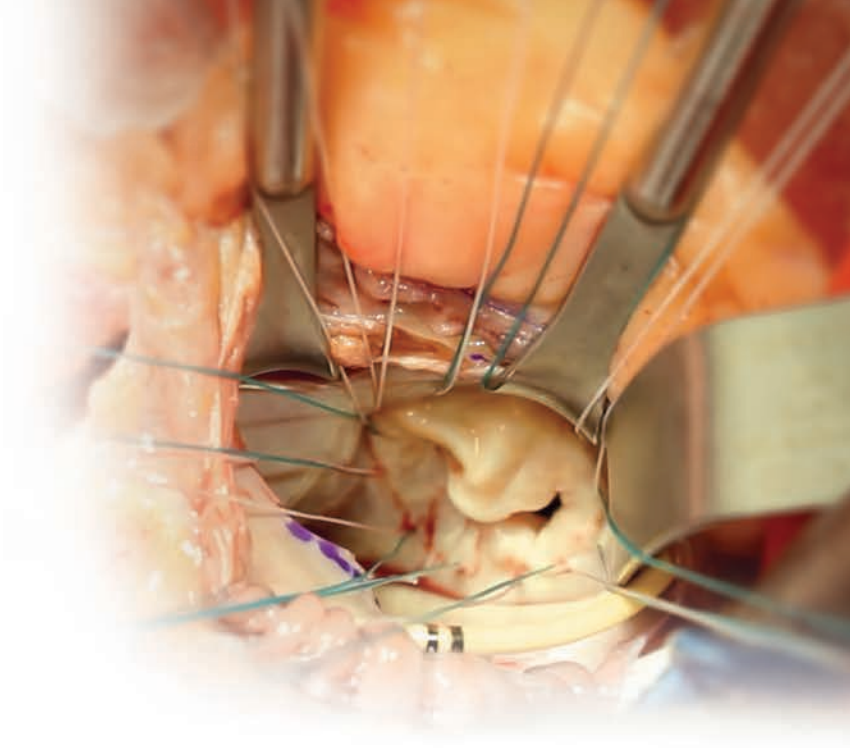
## Bolling Retractor System

### Maintain Exposure for a Steady Procedure

The Bolling Retractor provides Uncompromised Exposure for a variety of procedures and exposures.

Fast, easy, secure, and out of the way, the fully customizable system is especially ideal for:

- Trans Septal Approach
- Direct Atrial Approach
- Thoracotomy Approach
- Mitral Valve Repair
- Mitral Valve Replacement
- MAZE



*"Set it and forget it"*

- Steven Bolling, MD



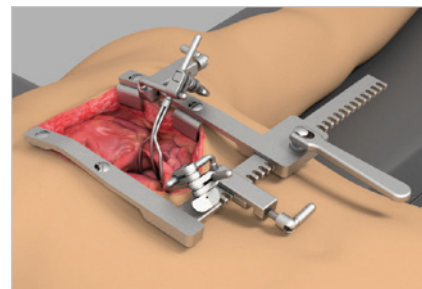
#### Low Profile

A frame sitting just above the spreader, combined with shorter handles, makes the Bolling Retractor extremely low profile.



#### Strong, Stable Retraction

The secure attachments and joints are strong and secure, resulting in a stable "set it and forget it" system.



#### Versatility

Attaches to most sternal and rib spreaders, allowing for multiple configurations and approaches.



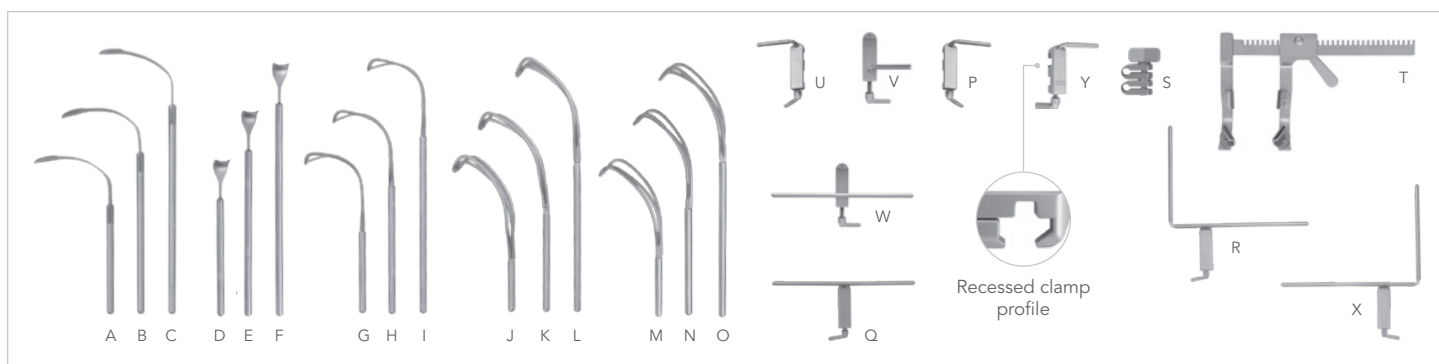
#### SYSTEM NOTICE

The Bolling Retractor is compatible with most sternal or rib spreaders. Low profile attachments sit near flush with spreader.



#### NOTICE

See our surgical video online at [thompsonsurgical.com](http://thompsonsurgical.com)



### BOLLING MITRAL VALVE RETRACTOR KIT #91072CV

REF	QTY	ITEM DESCRIPTION	PART #
A	1	Malleable Paddle 5"	43100
B	1	Malleable Paddle 6 ½"	43101
C	1	Malleable Paddle 8"	43102
D	1	Cushing 5"	43103
E	1	Cushing 6 ½"	43104
F	1	Cushing 8"	43105
G	1	Small Basket 5"	43106
H	1	Small Basket 6 ½"	43107
I	1	Small Basket 8"	43108
J	1	Medium Basket 5"	43109
K	1	Medium Basket 6 ½"	43110
L	1	Medium Basket 8"	43111
M	1	Large Basket 5"	43112
N	1	Large Basket 6 ½"	43113
O	1	Large Basket 8"	43114
P	2	CV Clamp L-Bar 2"	47200N
Q	1	CV Clamp T-Bar 8"	47201N
R	1	CV Clamp L-Bar 6" x 8"	47202N
S	3	Universal Joint	47204
	1	Instrument Case	50000BOL

### SUGGESTED STERNAL SPREADERS \*

REF	ITEM DESCRIPTION	PART #
T	Morse Sternal Spreader 29mm (w) x 22mm (d)	300251
	Morse Sternal Spreader Large 29mm (w) x 38mm (d)	300253

\* The Bolling Retractor is compatible with most sternal or rib spreaders.

### THORACOTOMY EXPANSION KIT

REF	QTY	ITEM DESCRIPTION	PART #
A	1	Malleable Paddle 5"	43100
B	1	Malleable Paddle 6 ½"	43101
C	1	Malleable Paddle 8"	43102
D	1	Cushing 5"	43103
E	1	Cushing 6 ½"	43104
F	1	Cushing 8"	43105

### BOLLING MITRAL VALVE RETRACTOR ACCESSORIES

REF	ITEM DESCRIPTION	PART #
U	CV Clamp Mini L-Bar Reversed 2"	47200NR **
V	CV Clamp Mini L-Bar Offset 2"	47200NF **
W	CV Clamp T-Bar Offset 8"	47201NF ***
X	CV Clamp L-Bar Reversed 6" x 8"	47202NR ****

\*\* Compare to #47200N \*\*\* Compare to #47201N \*\*\*\* Compare to #47202N

### RECESSED ATTACHMENTS \*\*\*\*\*

REF	ITEM DESCRIPTION	PART #
Y	CV Clamp L-Bar Recess 2" (51mm)	47300N
	CV Clamp T-Bar Recess 8" (203mm)	47301N
	CV Clamp L-Bar Recess 6" x 8" (152mm x 203mm)	47302N
	CV Clamp Mini L-Bar Recess Reversed 2" (51mm)	47300NR
	CV Clamp Mini L-Bar Recess Offset 2" (51mm)	47300NF
	CV Clamp T-Bar Recess Offset 8" (203mm)	47301NF
	CV Clamp L-Bar Recess Reversed 6" x 8" (152mm x 203mm)	47302NR

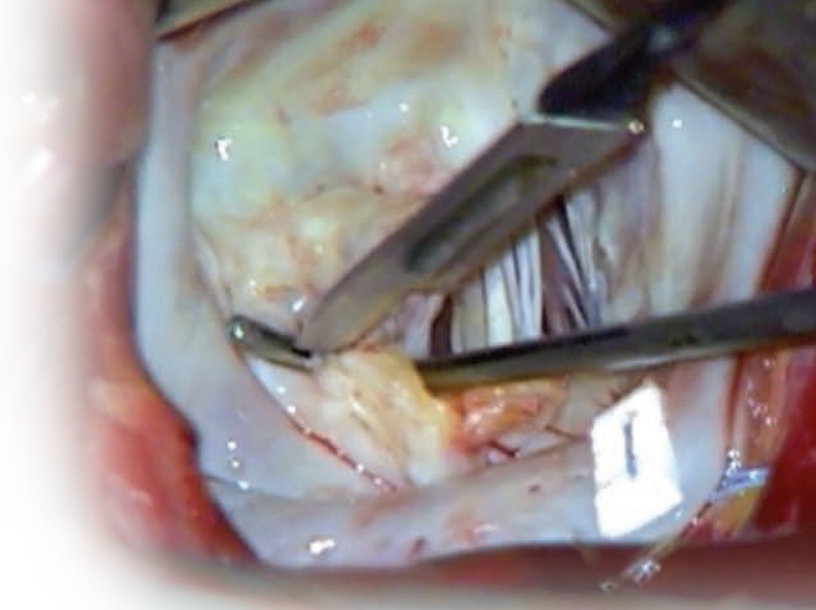
\*\*\*\*\* Recessed Attachments are designed to work with Ankeney sternal spreaders.



## Drake Hook

### Improved Chord Lysis and Division of Rheumatic Tissue

Designed with input from Daniel H. Drake, MD, the Drake Hook is the only hook on the market that contains a cutting groove to prevent slippage. The tip also features a slightly longer catch, enhancing subvalvular exploration.



*"The Drake Hook is an important tool for subvalvular mitral repair.  
The cutting groove facilitates safe commissurotomy and chord lysis."*

**- Daniel H. Drake, MD**



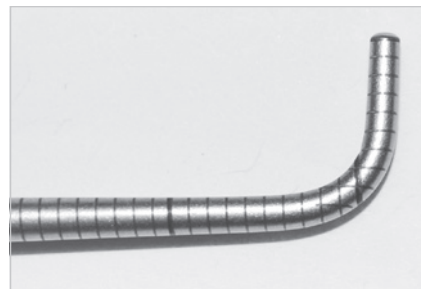
#### Exclusive Cutting Groove

This unique groove prevents scalpel slippage, easing chord lysis and division of rheumatic tissue.



#### Laser Etched Markers

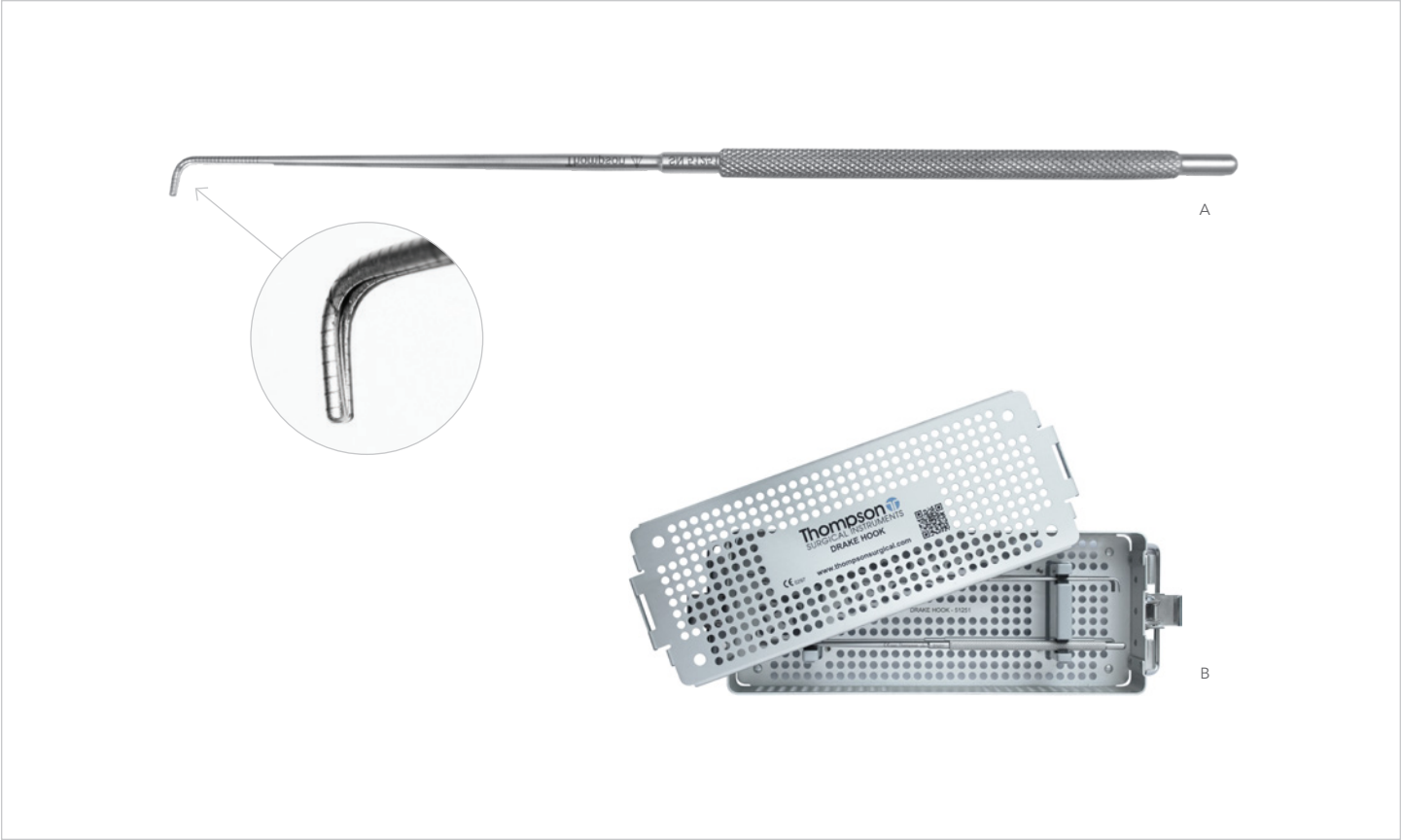
Laser etched markers allow for rapid, precise size indication. Smooth finish without ridges won't catch scalpel.



#### Longer Catch

Slightly longer ( 1 cm ) catch enhances subvalvular exploration for restrictive tissue.





DRAKE HOOK

REF	ITEM DESCRIPTION	PART #
A	Drake Hook (258mm)	51251

INSTRUMENT CASE

REF	ITEM DESCRIPTION	PART #
B	Instrument Case - Drake Hook	50000DH

**NOTICE**  
Thompson recommends a purchase or trial of two hooks as it may be desirable to use two at a time.

**INSTRUMENT CASE NOTICE**  
Instrument Case ( 50000DH ) holds two hooks.

For a Free Trial Call Today\*

**1.800.227.7543**

Rev B  
041420  
mg cardio




Uncompromised Exposure

VISIT US ONLINE: [THOMPSONSURGICAL.COM](http://THOMPSONSURGICAL.COM)

**Thompson**   
SURGICAL INSTRUMENTS

\* Free trial valid for U.S. customers only. Customers outside the U.S.A., please call +1-231-922-0177 for availability.

© 2020 Thompson Surgical Instruments, Inc. Printed in U.S.A.

® S-Lock®, PLA®, and the "T Circle" logomark  are Registered Trademarks of Thompson Surgical Instruments, Inc.  
Patents: tpat.com

**Made In**  
**USA** 